



SEARS' CRESCENT

STREET LEVEL

RETAIL OPPORTUNITIES FOR LEASE

100 CITY HALL PLAZA, BOSTON, MA 02108



Boston Realty Advisors

SEARSCRESCENT.COM



CHEVRON
PARTNERS



HIGHLY VISIBLE STOREFRONTS IN DOWNTOWN BOSTON

Chevron Partners is pleased to present three street-level retail offerings in Boston's bustling Government Center. Located adjacent to Boston City Hall and steps from the Freedom Trail and its historic landmarks, these spaces attract office workers, tourists and area residents alike. The new renovation of City Hall Plaza offers seating and gathering areas, a public art space, and can host events up to 20,000 people.

THREE STREET LEVEL RETAIL OPPORTUNITIES



FIRST FLOOR
RETAIL SUITE A
1,800 SQFT

FIRST FLOOR
RETAIL SUITE B
1,200 SQFT

FIRST FLOOR
RETAIL SUITE D
1,321 SQFT



FIRST FLOOR

RETAIL SUITE A

1,800 SQFT

1,800 SQFT OVER TWO LEVELS

12FT CEILINGS

With 27 feet of frontage and 3 windows overlooking Government Center

PRIVATE BATHROOMS

FULLY VENTED

For restaurant use

REAR ACCESS

For deliveries and loading dock



GOVERNMENT CENTER



FIRST FLOOR

RETAIL SUITE B

1,200 SQFT

1,200 SQFT OF RETAIL SPACE

With lower level space

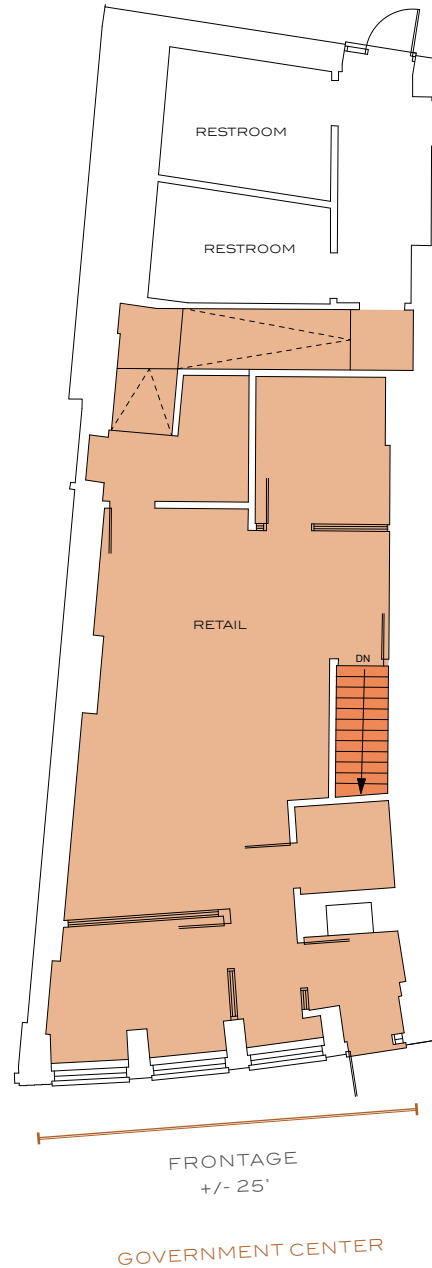
11FT CEILINGS

With 25 feet of frontage and 3 windows overlooking Government Center

COMMON BATHROOMS

REAR ACCESS

For deliveries and loading dock





FIRST FLOOR

RETAIL SUITE D

1,321 SQFT

1,321 SQFT OVER TWO LEVELS

With 766 sqft of first level retail space and 555 SQFT of lower level space

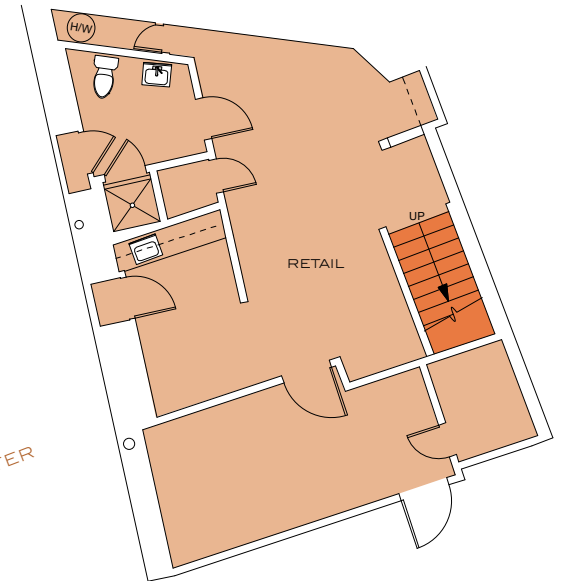
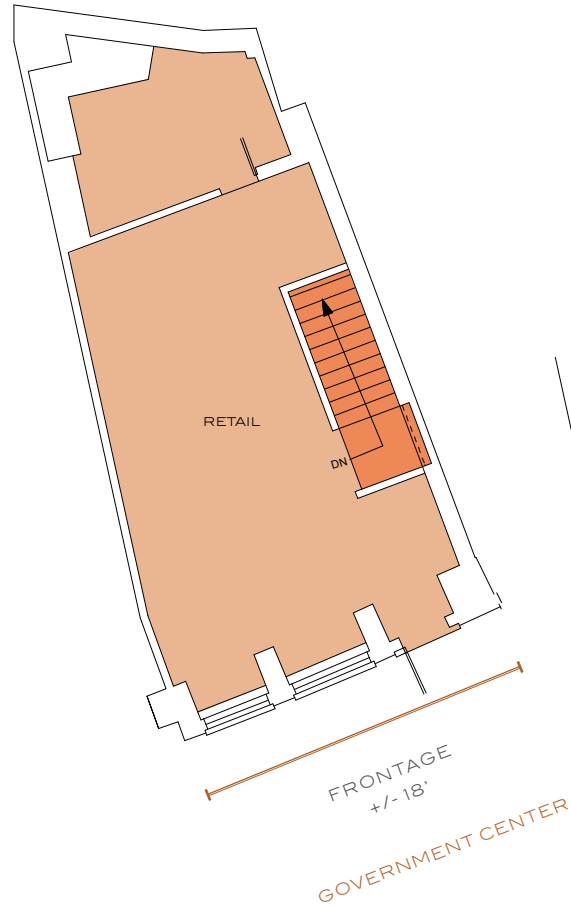
11FT CEILINGS

With 18 feet of frontage and 2 windows overlooking Government Center

PRIVATE BATHROOM

LOWER LEVEL ACCESS

For deliveries and loading dock





AREA ATTRACTIONS

Over 160,000 employees, 8,000 residents, and 13,000 students are located in Downtown Boston.

- 350 ft Boston City Hall
Estimated 20,000 - 30,000 daily visitors
- 0.2 mi Suffolk University
Approximately 7,000 students and faculty
- 0.5 mi Faneuil Hall
Estimated 15 million annual visitors
- 0.5 mi Freedom Trail
Estimated 4 million annual visitors
- 0.5 mi New England Aquarium
Estimated 1.3 million annual visitors

COLOR KEY

- Retail
- Restaurants
- Fitness
- Historic

- SOUTH STATION**
- BANK OF AMERICA
 - CITIZENS BANK
 - CVS
 - TAVERN IN THE SQUARE
 - DUNKIN'
 - AUNTIE ANNE'S
 - MCDONALD'S
 - REGINA PIZZERIA
 - CAFFE NERO
 - STARBUCKS
 - MELTING SUN
 - MASTER WOK

NEIGHBORING TENANTS





















FOR LEASING INFORMATION

WHITNEY GALLIVAN

617.850.9612

WGALLIVAN@BRADVISORS.COM

JOE WAGNER

617.850.9675

JWAGNER@BRADVISORS.COM