



SEARS' CRESCENT  
CONVERGENCE OF TIME

STREET LEVEL

# RETAIL OPPORTUNITIES FOR LEASE

100 CITY HALL PLAZA, BOSTON, MA 02108



SEARSCRESCENT.COM



CHEVRON  
PARTNERS



## HIGHLY VISIBLE STOREFRONTS IN DOWNTOWN BOSTON

Chevron Partners is pleased to present four street-level retail offerings in Boston's bustling Government Center. Located adjacent to Boston City Hall and steps from the Freedom Trail and its historic landmarks, these spaces attract office workers, tourists and area residents alike. The new renovation of City Hall Plaza offers seating and gathering areas, a public art space, and can host events up to 20,000 people.

SEARS' CRESCENT

FOUR STREET LEVEL RETAIL OPPORTUNITIES



FIRST FLOOR  
**RETAIL SUITE A**  
1800 SQFT

FIRST FLOOR  
**RETAIL SUITE B**  
1200 SQFT

FIRST FLOOR  
**RETAIL SUITE C**  
1450 SQFT

FIRST FLOOR  
**RETAIL SUITE D**  
1321 SQFT



FIRST FLOOR

**RETAIL SUITE A**

1800 SQFT

1800 SQFT OVER TWO LEVELS

12FT CEILINGS

With 27 feet of frontage and 3 windows overlooking Government Center

PRIVATE BATHROOMS

FULLY VENTED

For restaurant use

REAR ACCESS

For deliveries and loading dock



GOVERNMENT CENTER



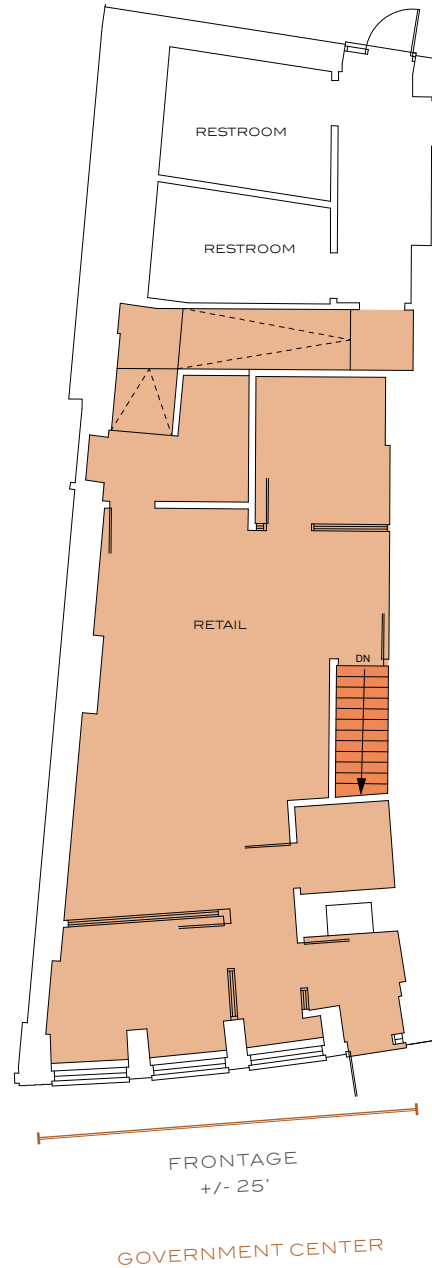
FIRST FLOOR  
**RETAIL SUITE B**  
 1200 SQFT

1200 SQFT OF RETAIL SPACE  
 With lower level space

11FT CEILINGS  
 With 25 feet of frontage and 3 windows overlooking  
 Government Center

COMMON BATHROOMS

REAR ACCESS  
 For deliveries and loading dock





#### FIRST FLOOR

### RETAIL SUITE C

1450 SQFT

1450 SQFT OF RETAIL SPACE

With lower level storage

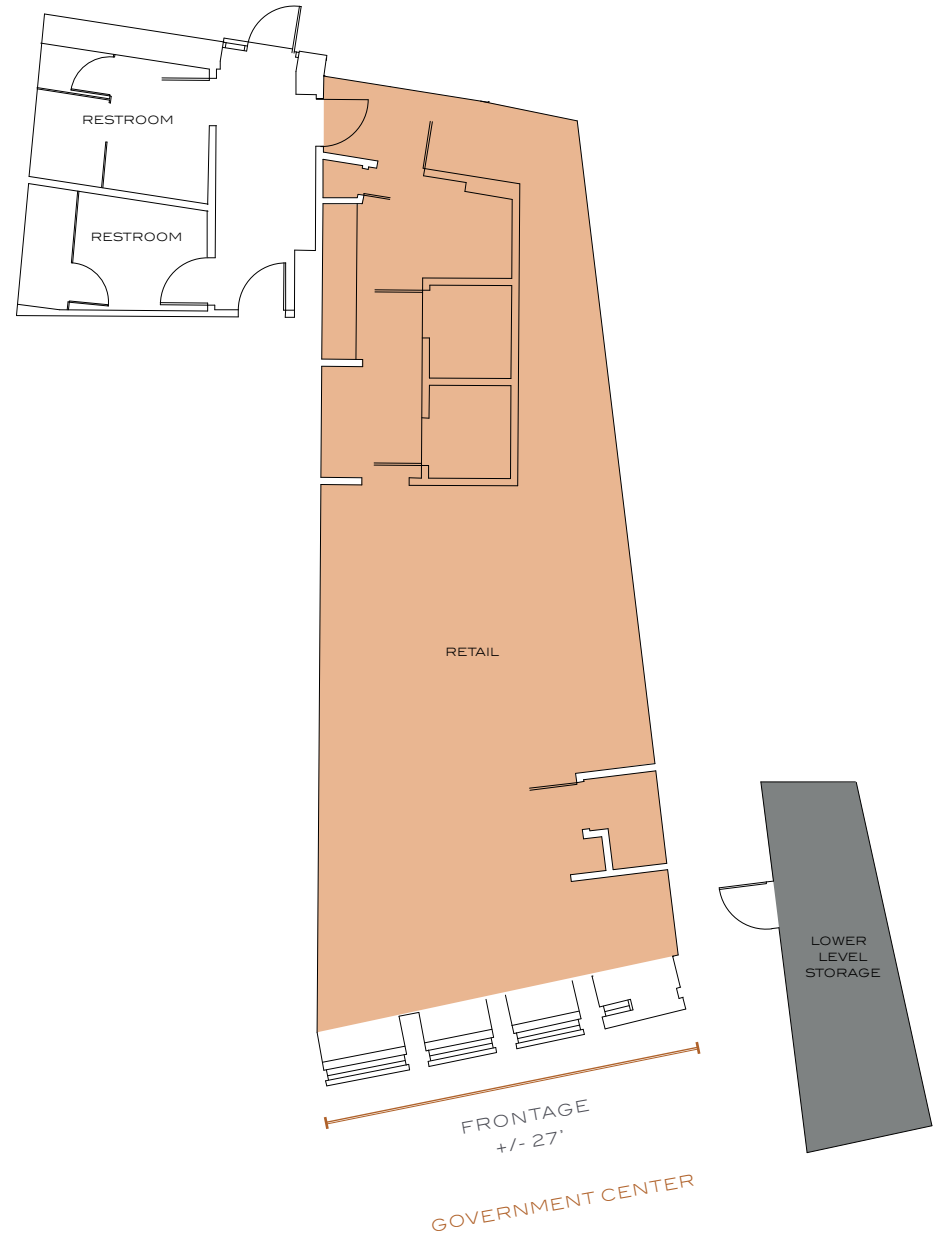
10FT CEILINGS

With 27 feet of frontage and 3 windows overlooking Government Center

COMMON BATHROOMS

REAR ACCESS

For deliveries and loading dock





#### FIRST FLOOR

### RETAIL SUITE D

1321 SQFT

#### 1321 SQFT OVER TWO LEVELS

With 766 sqft of first level retail space and 555 SQFT of lower level space

#### 11FT CEILINGS

With 18 feet of frontage and 2 windows overlooking Government Center

#### PRIVATE BATHROOM

#### LOWER LEVEL ACCESS

For deliveries and loading dock





### AREA ATTRACTIONS

Over 160,000 employees, 8,000 residents, and 13,000 students are located in Downtown Boston.

- 350 ft Boston City Hall  
Estimated 20,000 - 30,000 daily visitors
- 0.2 mi Suffolk University  
Approximately 7,000 students and faculty
- 0.5 mi Faneuil Hall  
Estimated 15 million annual visitors
- 0.5 mi Freedom Trail  
Estimated 4 million annual visitors
- 0.5 mi New England Aquarium  
Estimated 1.3 million annual visitors

### COLOR KEY

- Retail
- Restaurants
- Fitness
- Historic

### NEIGHBORING TENANTS





FOR LEASING INFORMATION

WHITNEY GALLIVAN

617.850.9612

WGALLIVAN@BRADVISORS.COM

JOE WAGNER

617.850.9675

JWAGNER@BRADVISORS.COM